



Sports Centre at the Silesian University of Technology
Academic Sports Association AZS at the Silesian
University of Technology
Gliwice Town
Polish Curling Association

BALTIC CUP 2007

INFORMATION FOR PARTICIPANTS

Dates: 31st October – 3rd, 2007

Arrival and Team meeting:	30 th October
Opening ceremony and practice:	31 st October morning
Round Robin games:	31 st October – 2 nd November
Semi finals and Finals:	3 rd November
Closing ceremony and Banquet:	3 rd November

Place: „Tafla” Ice-Rink, Gliwice, Poland (see information below)

Entry fee: Entry fee 300 EUR per team should be paid to Host Committee (see details in Entry form) **till 15th October, 2007** by National associations or Teams directly.

Entries deadlines: All entries should be sent to Karlis Smilga (Karlis.Smilga@inbox.lv) till **1st September, 2007**. To make an entry Baltic Cup special entry form should be fulfilled.

Practice: The day before Baltic Cup Opening teams will be able to practice 10 minutes per sheet.

Ice: Ice will be prepared and maintained by a qualified technician (ice-master), using Ice cutting machine „The Boss” 48 hours before competition. Ice usually is not used for ice hockey purposes.

System of Play: System of Play and Schedule will be announced by the Board of Baltic Cup at 20th September. See details in Baltic Cup Rules of Play.

Prizes: Medals and cups for first three places. Special diplomas for all participating teams, special prizes and awards.

Banquet: Host Committee will organize banquet for the participants and Baltic Cup 2007 guests free of charge. See details below.

Accommodation: See below. Please contact Host Committee to book hotel rooms (Klaudia.Swider@polsl.pl)

Information about arena: See details below

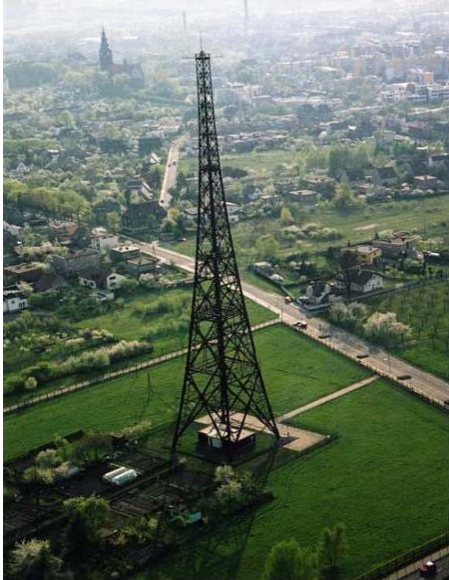
Information about town: See details below

Transport: see details below

Map: see details below

Gliwice Town

Gliwice is situated in the southern-west part of Poland in the west side of Silesia on the river Kłodnica. Gliwice has got the most beautiful old town in Silesia with its historical past. Gliwice is one of the most important industrial and scientific centre in the country. A Silesian Technical University is based in the town.



The old town square is surrounded with renovated tenements, with a gothic town hall and a Neptun fountain in the middle. There is a Piast Castle nearby, a former Piast residence, a museum of history and archeology now.

Gliwice's museum is now placed at Villa Caro which holds a permanent museum exhibition, depicting the 19th -century residential interiors of Urban mansions of industrialists, in order to present the original furnishings and elements of equipment from the 19th century.

One of the most characteristic structures in the Upper Silesia is an aerial tower at the Tarnogórska Street in Gliwice. The complex of the radio station buildings was constructed in the period 1934 - 35 by a German company Lorenz (co-operation: Siemens, Telefunken, and others). The main edifice still holds much of the original



pre-war equipment preserved. The most valuable structure of the entire complex is - obviously - the broadcast tower, at present believed to be the tallest wooden structure in the world (110m). Diligently maintained, preserved and repaired every year, according to the scientists from the Silesian University of Technology, it still has 20 years of safe functioning ahead. It is built of larch wood, specially resistant to vermin and atmosphere factors. The beams are joined together with brass screws.

There is not a single iron nail in the tower. The tower looks specially attractive after dusk. Illuminated with eight massive spotlights, it is well visible from a distance of

many kilometers, and it has a lasting impression upon the visitors.



Gliwice is also a modern and developing town with many hypermarkets like: Arena Gallery, Carrefour, Tesco, Leroy Merlin. A giant complex of boutiques, restaurants and cinemas "Forum" will have it's opening soon in Gliwice.

There are many sport clubs like Technical University Sport Association AZS, GKS "Piaś" and Sport Club "Carbo" in Gliwice. Technical University Sport Association is proud of many success reached on national level.

AZS Judo section is training Polish Masters and table tennis section is a representative of Polish top league. AZS is also very strong with its volleyball and basketball players.

Gliwice is a characteristic town with a big variety of visage. Modern and simultaneously turned into its interesting past.



Ice Rink

Baltic Cup 2007 is planned to be organized on „Tafla” Ice Rink in Gliwice. In 2003 the



Arena was seriously repaired, roofing and equipped with modern frozen systems. The Ice Rink is available to the citizens and Technical University students during their physical classes.

It is forbidden to play hockey on the Arena.

Since 2005 curling is present on the Ice Rink. Through the past 2 years the discipline was strongly developing being now one of the most popular sport discipline on the rink. Curling sections of KŚ AZS Gliwice, as well as other Silesian curling clubs are training on „Tafla” Ice Rink. The Arena is also a place where national curling representation is training before the important competitions e.g. Europe Championship. Many competitions of a Master and informal range were organized on the “Tafla” Rink. There are 5 curling sheets prepared on the ice.

The Address: „Tafla” Ice-Rink, Gliwice, Akademicka Street 29



Accommodation

We would like to recommend a net of „**Diament**” and „**Diament Plaza**” hotels as the main accommodation place for the competition.

The “**Diament**” 3 star hotels are one of the most comfortable in the town. A high standard of service guarantees a good rest. Both Hotels are in a distance of 1 km from the Ice-Rink.

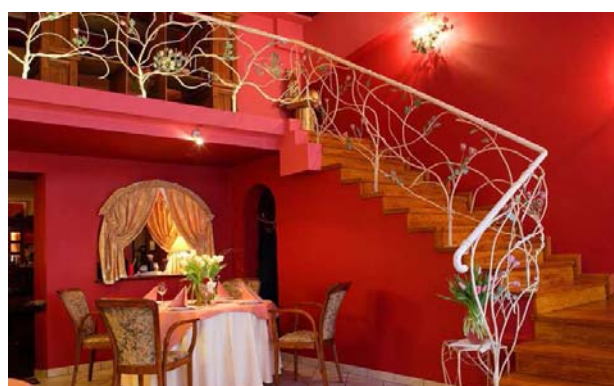
Hotel „Diament” – [http:// www.hoteldiament.pl](http://www.hoteldiament.pl)

Address: Zwycięstwa Street, 44-100 Gliwce

Tel. +48 32 231 18 21, fax. +48 32 231 71 26



Hotel „Diament Plaza”- [http:// www.hoteldiament](http://www.hoteldiament)
Address: Zwycięstwa 42 Street, 44-100 Gliwice
tel. +48 32 231 18 21, fax. +48 32 231 71 26



Price policy

80 PLN per bed in double rooms

110 PLN per night in single

Please, notice that the prize in both high standard Hotels is especially prepared for Baltic Cup teams.

Each team is supposed to pay for the accommodation before checking-in.

We would also like to recommend the Silesian Technical University “**Sezam**” Hotel. High standard accommodation. Distance about 500 m from the Ice-Rink.

Address: Gliwice, Pszczyńska Street 89a; tel. +48 32 237-23-07

Link: [http:// www.polsl.pl/alma.mater/foto/sezam.html](http://www.polsl.pl/alma.mater/foto/sezam.html)



Banquet

We intend to organize the integrating banquet for participating teams and guest in one of the students clubs situated in the surround of „Tafla” and close to the Hotels.

Student Club „Spirala”

Address: Ks. M. Strzody 10 Street, 44-100 Gliwice

Link: [http:// www.spirala.gliwice.pl](http://www.spirala.gliwice.pl)



Feeding

Participants who wish to take full board can avail of student canteen (banquet place) in the price of:

- breakfast – **12 PLN**
- dinner – **16 PLN**
- supper – **12 PLN**

Teams should inform the Host Committee if they wish to take the feeding.

Suggested transport options:

- car
- plane
- bus

Distances between Gliwice and Baltic countries capitals :

LTU: Vilnius – **750 km**
LAT: Riga – Gliwice – **980 km**
EST: Tallinn – Gliwice – **1300 km**
FIN: Helsinki – Gliwice – **1850 km**
SWE: Stockholm – Gliwice – **1600 km**
DEN: Kobenhavn – Gliwice – **950 km**
GER: Berlin – Gliwice – **500 km**
RUS: Moscow- Gliwice – **1600 km**

International airports located close to Gliwice:

„Warsaw-Okęcie” Airport

Gliwice – „Warsaw-Okęcie” : **340 km**
[http:// www.lotnisko-chopina.pl](http://www.lotnisko-chopina.pl)

Cracow-Balice Airport

Gliwice-„Cracow-Balice”: **100 km**
<http://www.lotnisko-balice.pl>

main connections: http://lotnisko-balice.pl/timetable_departures.html

„Katowice-Pyrzowice” Airport

Gliwice – „Katowice-Pyrzowice”: **39 km**

<http://www.airport.katowice.pl>

Wrocław Airport

Gliwice-Wrocław: **180 km**

<http://www.airport.wroclaw.pl/>

Bus transport - dependent on local travel agencies.

Host Committee

Sports Centre at the Silesian University of Technology



Academic Sports Association AZS at the Silesian University of Technology



Gliwice Town



Polish Curling Association



E-mail contact with host committee:

(send information to all address)

- krzysztof.czapla@polsl.pl
- rjm2@polsl.pl
- piotr.podgorski@polsl.pl

MAP

